

WATERFALL PICTURE REPAIR INSTRUCTION

Product trouble analysis:

Problem	Possible causes	Remedy
No light	Bad light bulb	Replace the light bulb
	Bad adaptor	Replace the adaptor
Dark picture	Bad light bulb	Replace the light bulb
Light works but no motion	Dead motor	Replace the motor
	Brackets are broken	Replace the brackets

Servicing tools:

Pliers and screw drivers

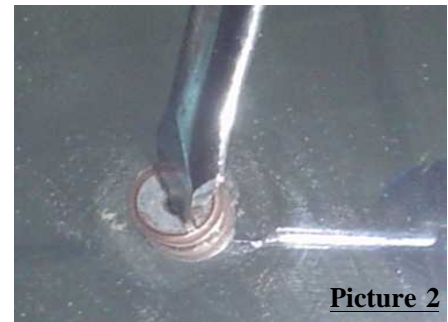
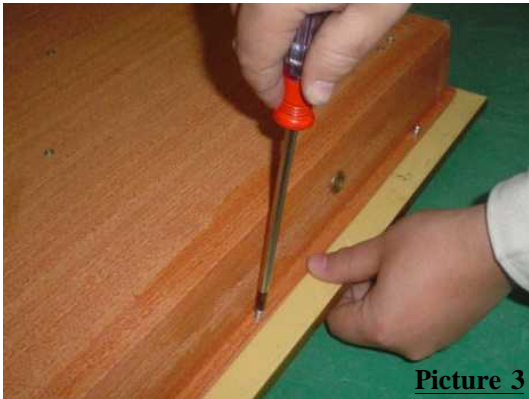
Servicing process:

Mirror frames

Remove the four caps that sit on the screws and unscrew the four screws. The glass will come right off.

Wood frames

Remove the screws from the back of the box and then remove the box frame from the mirror glass.

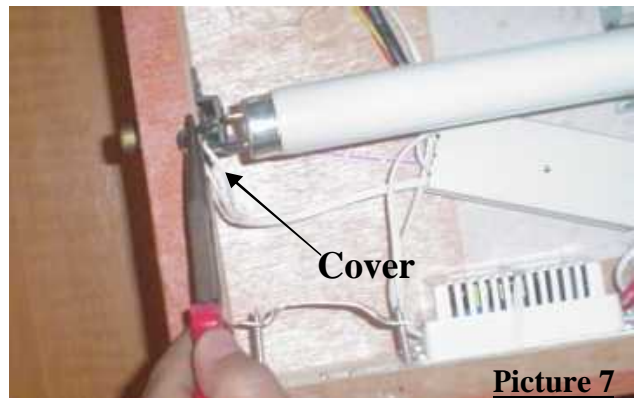
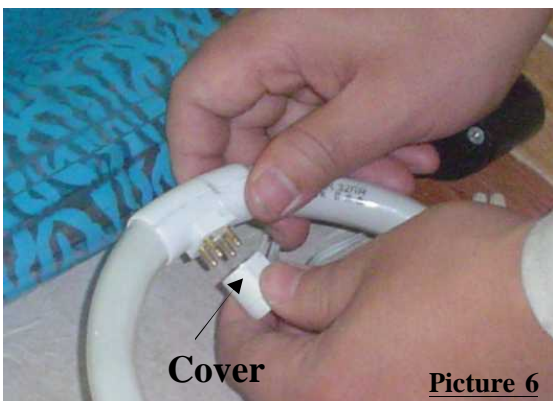
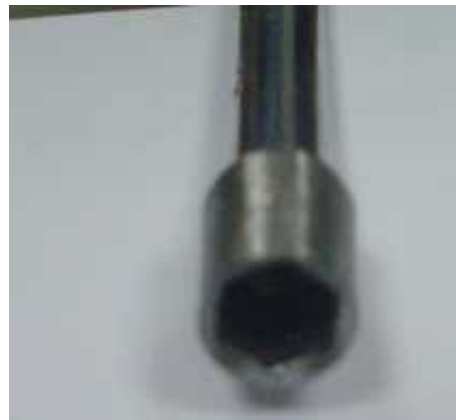


Changing the light bulbs

Using pliers and a small screwdriver, remove the little screws that hold the brackets which hold the light bulb in place. Once those brackets are removed the light bulb will come right off. You can now replace the bad bulb with a new one.



Picture 4



After replacing the light bulb, check to see if it works. If the light turns on insert the bulb back into the brackets and screw it back in.

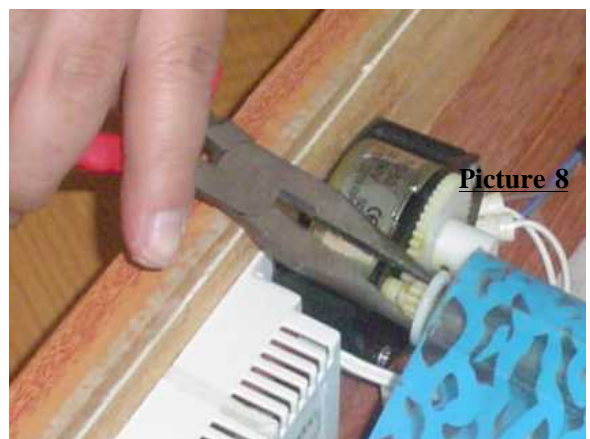
Changing the adaptor

If the problem was not fixed after changing the light bulb, change the adaptor.

Using a screwdriver, remove the adaptor, unscrew the top that covers it, and remove the down-lead of the adaptor.

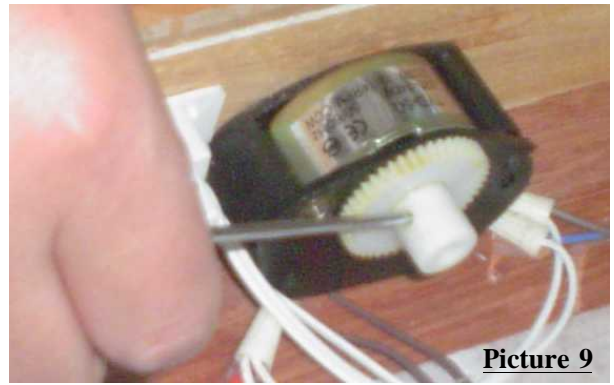
Changing the motor

Using a screwdriver remove the screws from the plastic black bracket that holds the motor in place and remove the motor. You will also need to remove the electrical wire cap and separate the wires.





Picture 10



Picture 9

Changing the brackets

Using a screwdriver, remove the little screws that hold the brackets in place. The bracket will slide right off and you can change it. After doing so put the metal pole back into the bracket.



Picture 11



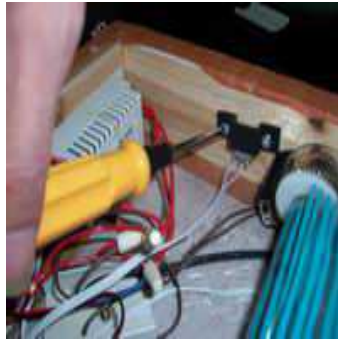
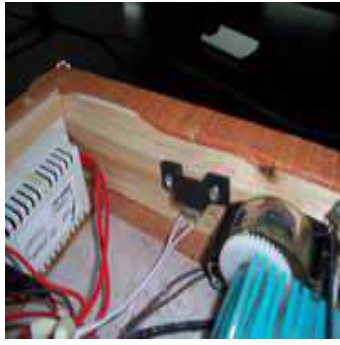
Picture 12

Replacing the music box

Turn off the power and open the knob that is used for the volume as shown below:



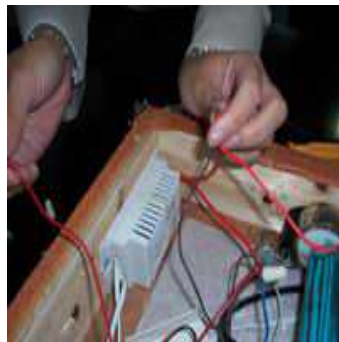
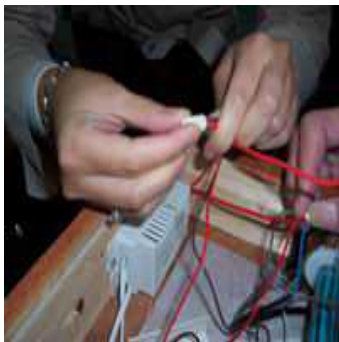
Once that is done, remove the screws that hold the music box in place.



Open the junction box by sliding the lid all the way out to remove it.



Remove the white electrical wire cap, and separate the wires.



Remove the knob and replace the music box..



Replace the music box. Connect the wires accordingly as they were beforehand.

